

Growing Up North

Join the conversation:

#GrowingUpNorth

🐦 @childrenscomm

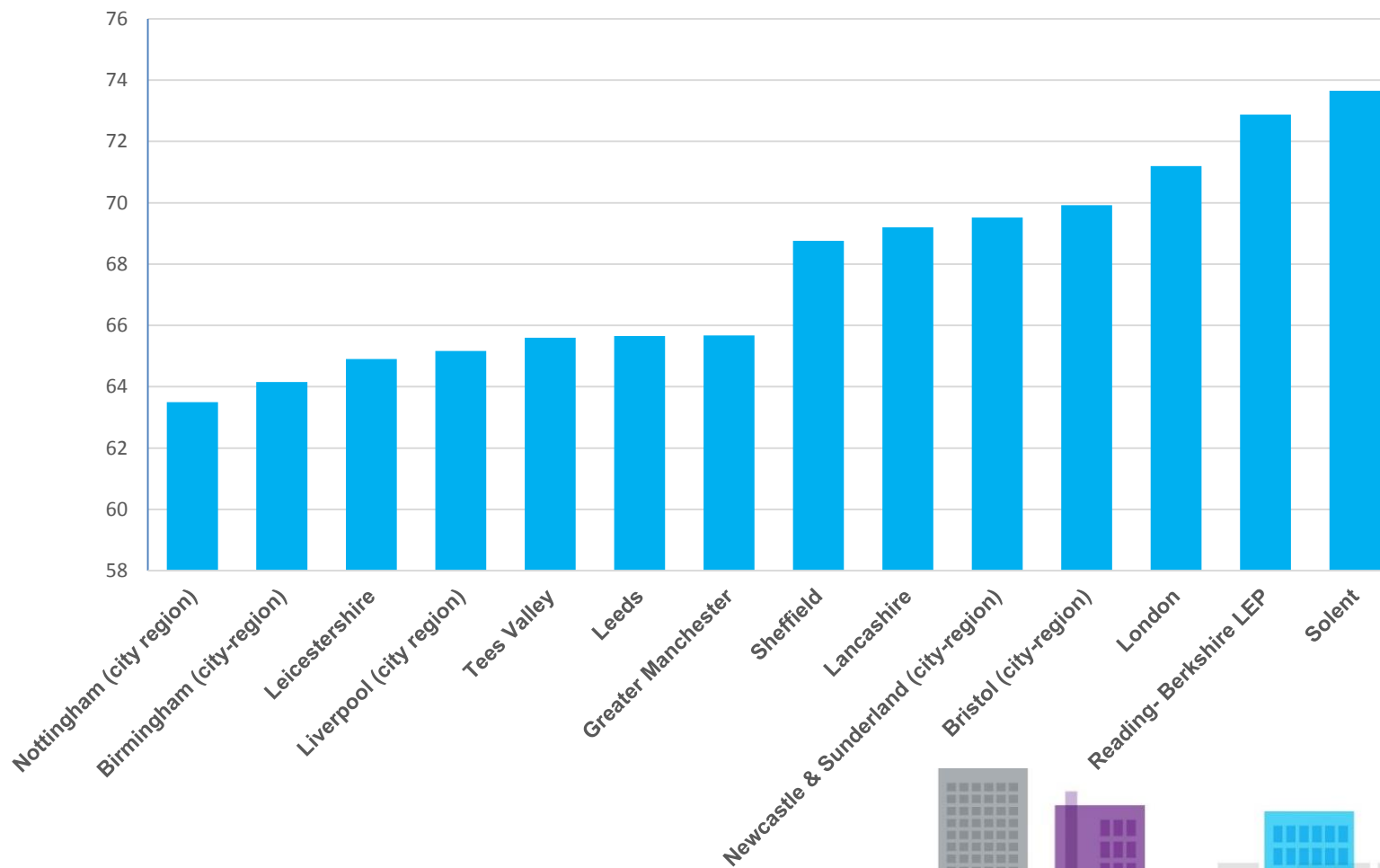


*“There are **3.6m** children in the North of England, I want all of them to have the best possible opportunities to look forward to happy, healthy and prosperous lives.”*

Anne Longfield OBE, Children’s Commissioner

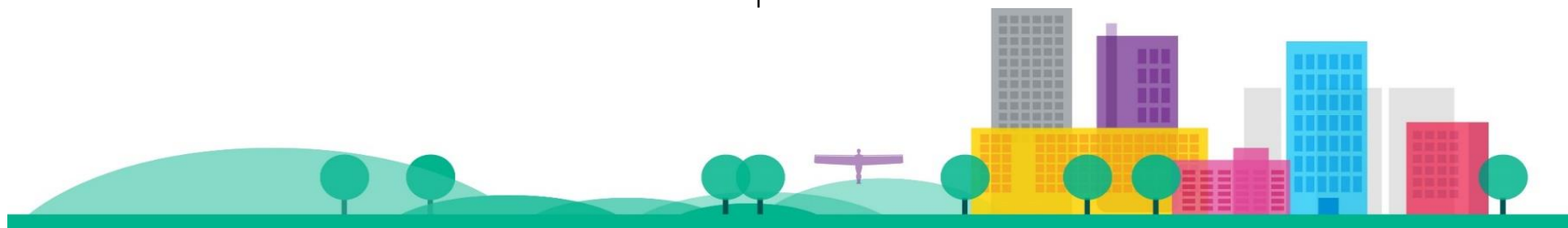


% of children reaching a good level of development upon starting school

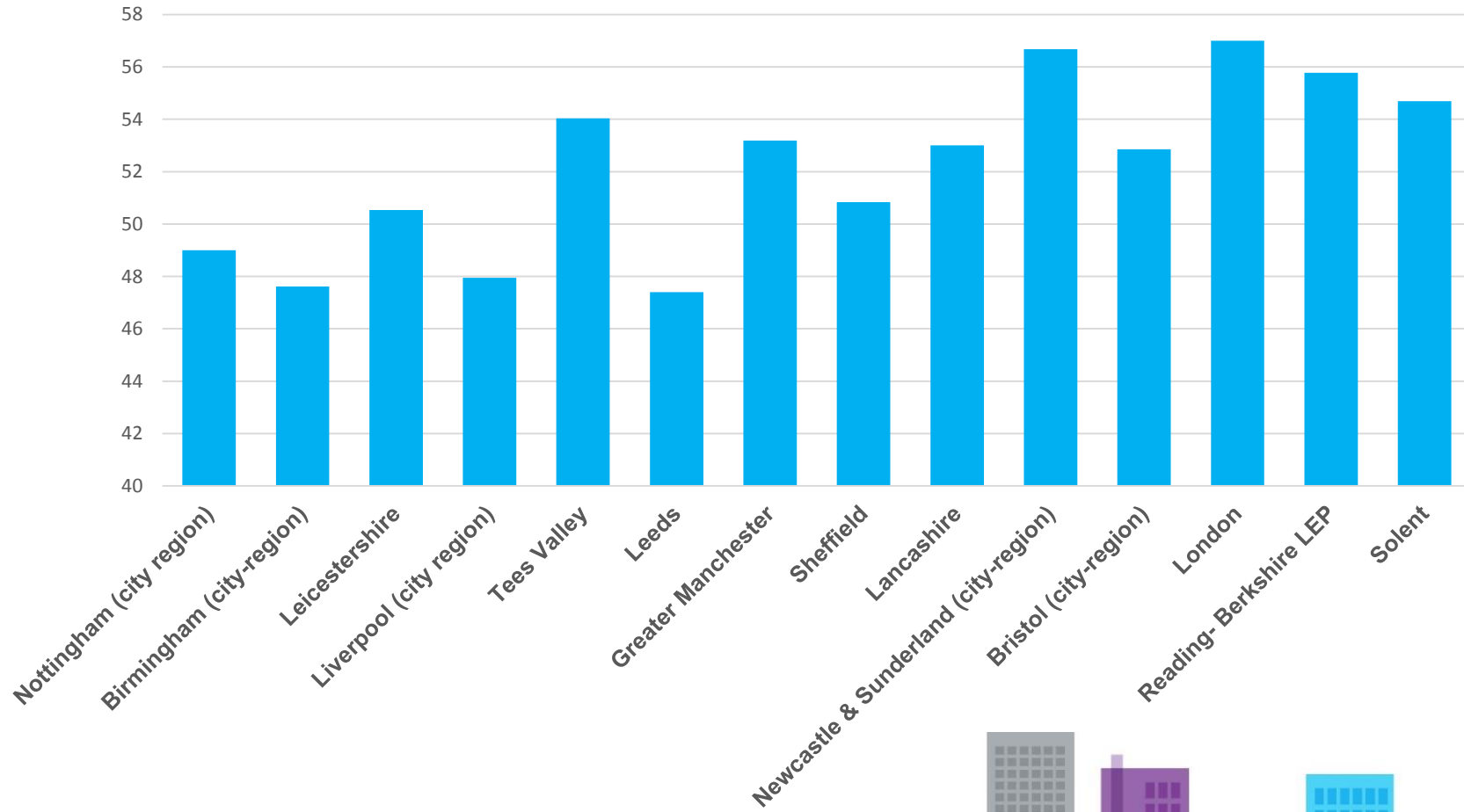


Areas where more than 20% of children start school reaching less than half of the expected development indicators

Area	% of children achieving an ELG score of less than 26
Halton	20%
Walsall	20%
Leicester	20%
Wolverhampton	20%
Manchester	20%
Rochdale	21%
Hull	21%
Peterborough	21%
Bolton	21%
Sandwell	22%
Stoke-on-Trent	23%
Middlesbrough	24%
Oldham	25%



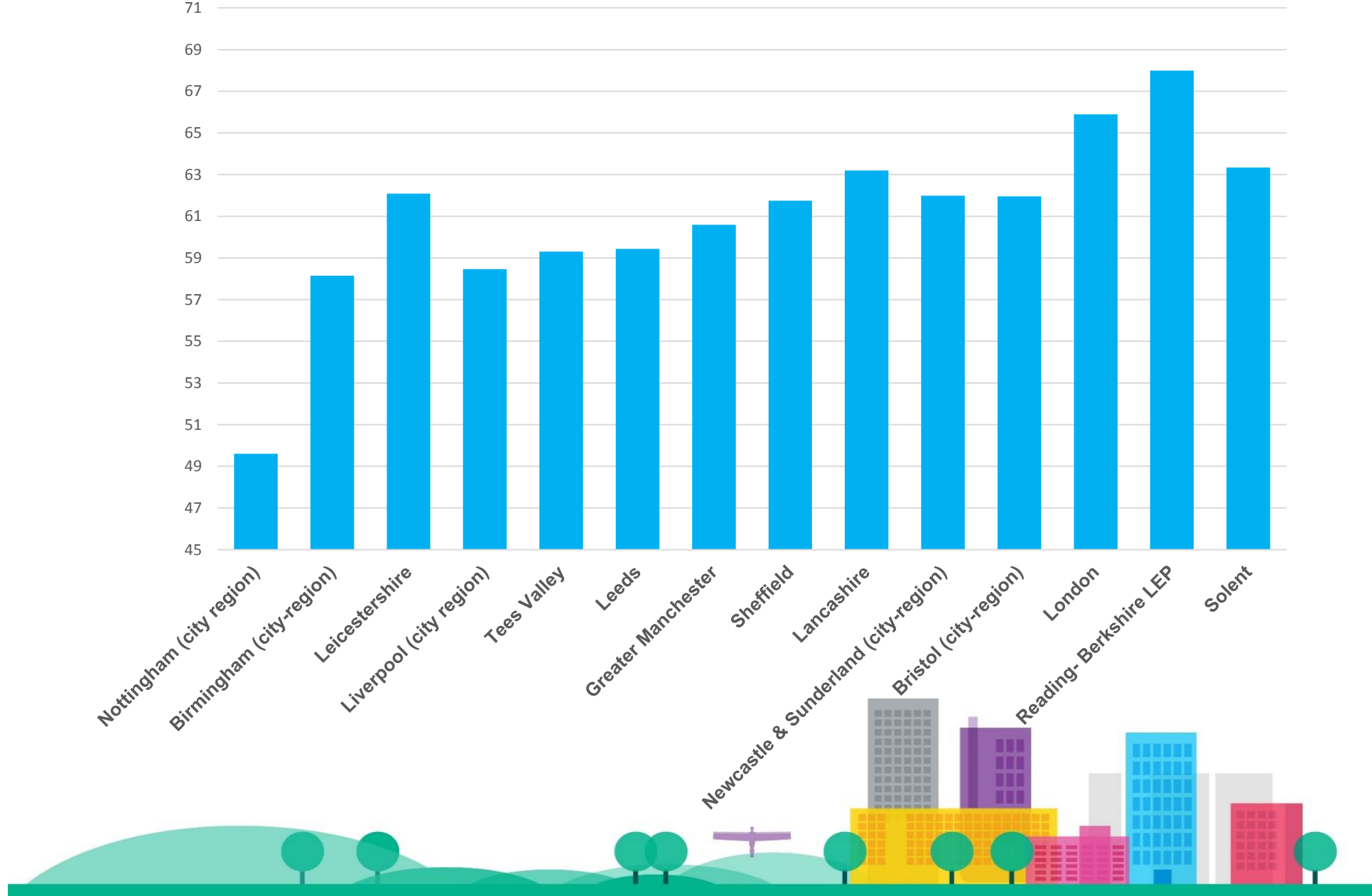
% children reaching the expected standard at end of KS2



Last year a child in Newcastle was **20%**
more likely to leave primary school at the
expected level across the core subjects
than a child in Liverpool



% achieving A*-C in English and Maths GCSEs



In 2015 **4%** of children in London went on to an apprenticeship after leaving school. In the North East the figure was **11%** and in Hartlepool **20%**



In 2015 a child taking A-levels in
London or the South-East was **57%**
more likely to go on a top-third UK
University than a child in the North of
England



“The Northern Powerhouse is an ambition to realise the collective potential of the North, it will take a generation to realise and that is why we have to look at schools, look at skills, look to the outcomes of the next generation.”

Lord Jim O’Neill, one of the architects of the Northern Powerhouse project



“We need to ensure we build children into every aspect of Northern regeneration – from local planning to investment decisions – to give us a fighting chance of closing the North-South divide”

Anne Longfield OBE, Children’s Commissioner



Growing Up North

Get involved:

@childrenscomm

#growingupnorth

martin.lennon@childrenscommissioner.gsi.gov.uk

